



SPECIFICATIONS:

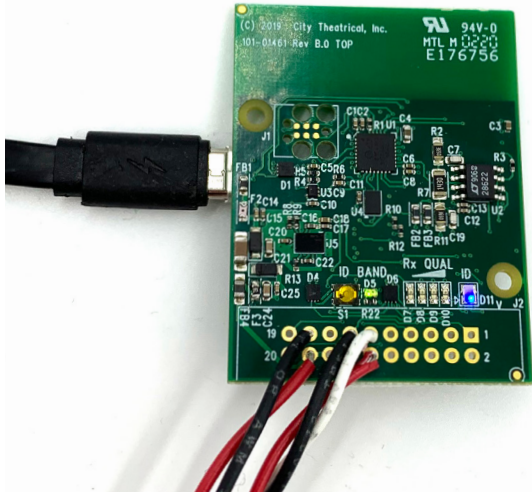
P/N	Frequency	Universes
5906	2.4GHz	1

Physical

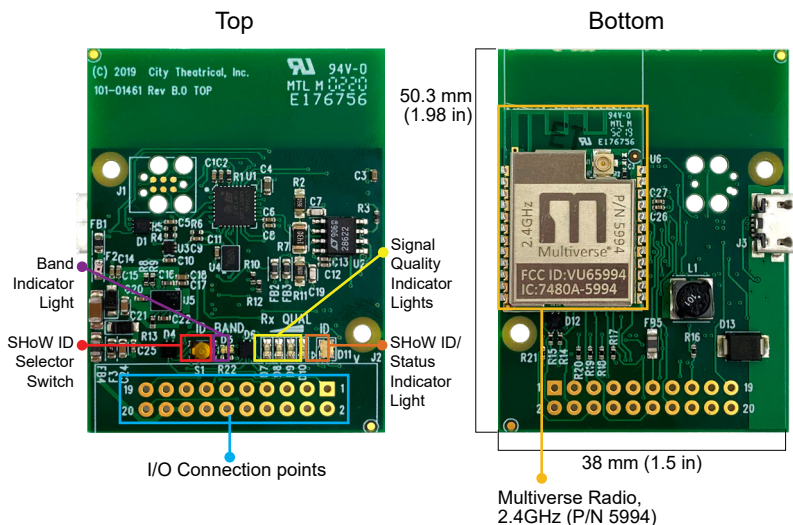
Length (with internal antenna)	50 mm	(2.0 in)
Width	38 mm	(1.5 in)
Height	6.4 mm	(0.25 in)
Antenna	Internal/Connection for external	
Construction	PCB assembly	
Power/Data Connector	20-Pin 2x10 0.100-inch header, male	

Product Information

Voltage Range	5-30VDC
Broadcast Power	Antenna dependent; 100mW EIRP
Broadcast Modes	Adaptive, Full, Low, Mid, High, Max
Outputs	Wireless DMX/RDM, 0-10V, PWM
SHoW IDs	Multiverse: 147; Neo: 70
Latency	4ms average
RF Sensitivity	-95dBm
RDM Features	RDM Proxy, RDM Responder
Configuration	City Theatrical USB Configuration Program (PC/Mac)
Use Environment	Indoor
Warranty	One year
Compliance	Pre compliance reports available for integrators



The **Multiverse Receiver Card, 2.4GHz** (P/N 5906) can be used by any lighting user to implement wireless DMX/RDM into entertainment projects or lighting equipment in a simple way. Multiverse Receiver Cards are full Multiverse wireless DMX/RDM receivers without the housing, XLR connectors, and user interface as used in wireless DMX receiving products like the Multiverse Node and Multiverse SHoW Baby. Multiverse Receiver Cards include an internal antenna and a connection to an optional external antenna. In addition to receiving wireless DMX and outputting wired DMX, the Multiverse Receiver Card can output 0-10V, and has four PWM control outputs.



(To scale)

*Multiverse Transceivers are covered by U.S. Patent # 7,432,803 and other patents pending.

