

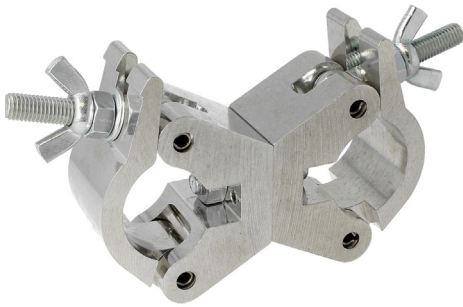


Product Data Sheet

Doughty Parallel Coupler



A pair of half couplers which provide a firm fixing between two parallel bars.



Part Nos	T57104 - Polished T57114 - Powder Painted Satin Black
Tube Diameter	Ø48 - 51mm
Materials	Main Body - AW6082 T6 Aluminium Roll Pins - Stainless Steel Eyebolt Assy - Grade 8.8
Max Tightening Torque	30Nm
Fixings	N/A
WLL	750Kg Vertical Load
Weight	1.33Kg
Factor of Safety	5:1
Approval	TÜV Approved

