



Source Four[®] **PAR**

CE Assembly Guide

Production Dates: September 2004 - Present

ATTENTION: The part numbers listed in this guide may differ from the parts required for your particular Source Four luminaire. Part numbers for luminaires change occasionally as parts are replaced or upgraded.

To ensure that you are ordering the proper part for your specific luminaire, please contact your ETC dealer, or ETC Customer Service for assistance.

Table of Contents

Declaration of Conformity	1
Basic Assembly	2
Lamp Socket Assembly	3
Assemble lamp socket.....	4
Housing Assembly	5
Assemble housing	6
Cleaning the reflector.....	7
Cleaning the lens.....	7
Lens identification	8

ETC[®], Emphasis[®], Expression[®], Insight[™], Imagine[™], Focus[™], Express[™], Unison[®], Obsession[®] II, ETCNet2[™], EDMX[™], Source Four[®], Revolution[®], Sensor[®], and WYSILink[™] are either registered trademarks or trademarks of Electronic Theatre Controls, Inc. in the United States and other countries.

All other trademarks, both marked and not marked, are the property of their respective owners.

ETC intends this document, whether printed or electronic, to be provided in its entirety.

Declaration of Conformity



We, Electronic Theatre Controls, Europe Ltd., declare under sole responsibility that the product:

Product name: Source Four PAR CE

Product type/model: Source Four PAR-EA

Lot: n/a

Batch/Serial number: n/a

Item numbers: one of each model

to which this declaration relates in conformity with the following standards:

EN60598-1:2000 Luminaires, General requirements and tests

EN60598-2-17:1990 Specification for luminaires for stage lighting, television, film, and photographic studios (outside and indoor) - equiv. BS 4533-102.17:1990

following the provisions of EU LV Directive(s) 73/23/EEC

London, United Kingdom

(Place of issue)

22nd Jan 1997

(Date of issue)

Mr. Adam Bennette

(Name of authorised person)

Adam Bennette

(signature of authorised person)

Electronic Theatre Controls Europe, Ltd.
Unit 26-28, Victoria Industrial Estate,
Victoria Road, London W3 6UU U.K.
Telephone (+44) (0)20 896 1000
Fax (+44) (0)20 896 2000

Registered office:
Grant Thornton House
Melton St., London NW1 28W, England
Registered in England No. 3057796
VAT No. 6629487 90

Basic Assembly

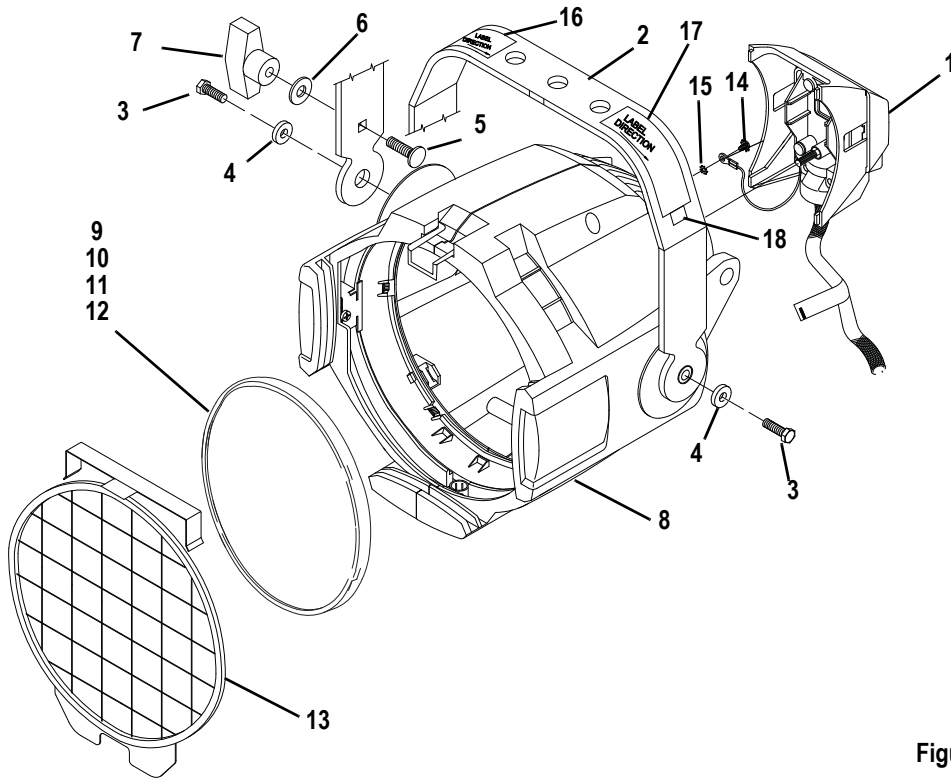


Figure 1

Reference Number	Part Number	Description	Quantity Required
1	7061A2201	Lamp socket assembly, black	1
	7061A2201-1	Lamp socket assembly, white	1
2	7061A3006	Bracket, yoke, black	1
	7061A3006-01	Bracket, yoke, white	1
3	HW5172	Bolt, hex, 1/4-20 x 1", black zinc	2
4	HW522	Washer, flat, 1/4, black zinc	2
5	HW5125	Bolt, carriage, 5/16-18, black zinc	1
6	HW5126	Washer, flat, 5/16, black zinc	1
7	HW8144	Handle, yoke knob, 5/16-18, black	1
	HW8144-1	Handle, yoke knob, 5/16-18, white	1
8	7061A2015	Housing Assembly, black	1
	7061A2015-1	Housing Assembly, white	1
9	7061A4002	Lens, clear, VNSP	1
10	7061A4003	Lens, stipple, NSP	2
11	7061A4005	Lens, medium flood, MFL	1
12	7061A4006	Lens, wide flood, WFL	1
13	7061A1030	Safety screen	1
14	HW3117	Screw, 8-32 x 3/8, PhPH, Taprite SEMS	1
15	HW349	Washer, External, #8, .170 x .381 x .023, zinc	1
16	7060A4042	Label, CE, warning, black	1
	7060A4043	Label, CE, warning, white	1
17	7061A4033	Label, I.D., CE, black	1
	7061A4034	Label, I.D., CE, white	1
18	I211	Label, date code, .5 x .43	1

Lamp Socket Assembly

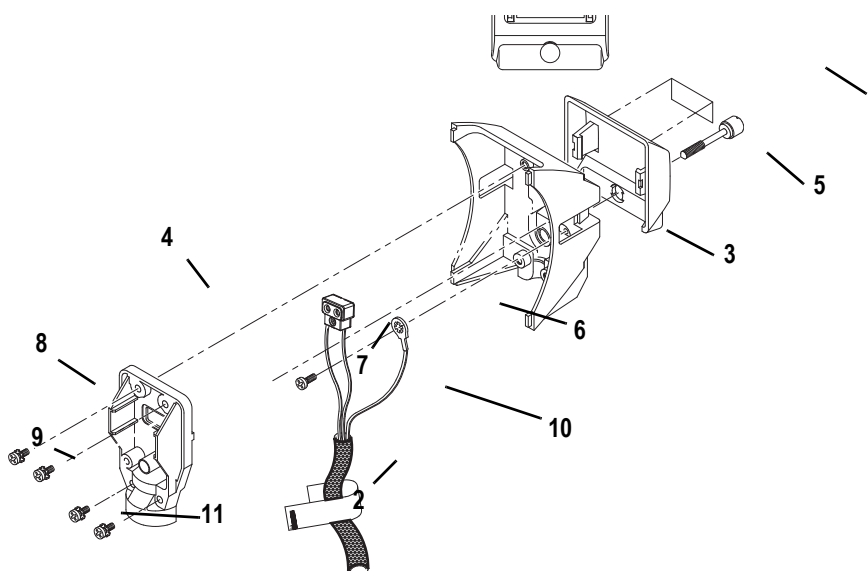


Figure 2

Reference Number	Part Number	Description	Quantity Required
1	7060A3025	Screw, 1/4-20 x 1.55, knurled	1
2	7061B7049	Label, CE colour code	1
3	7061A3023	Burner, casting, black	1
4	7061A3024	Strain relief, black	1
5	7061A4011	Focus handle, black	1
6	7061B7002	Ground Wire, 48"	1
7	HW2116	Screw, 6-32 x 1/4, black, zinc	1
8	HW3105	Screw, 8-32 x 3/8, PhPh, Taptite, SEMS	4
9	HW385	Screw, 8-32 x 3/8, PhPMS	1
10	7061B7001	PAR CE Cable assembly	1
11	7060B7017	Safety wire assembly	1

Assemble lamp socket

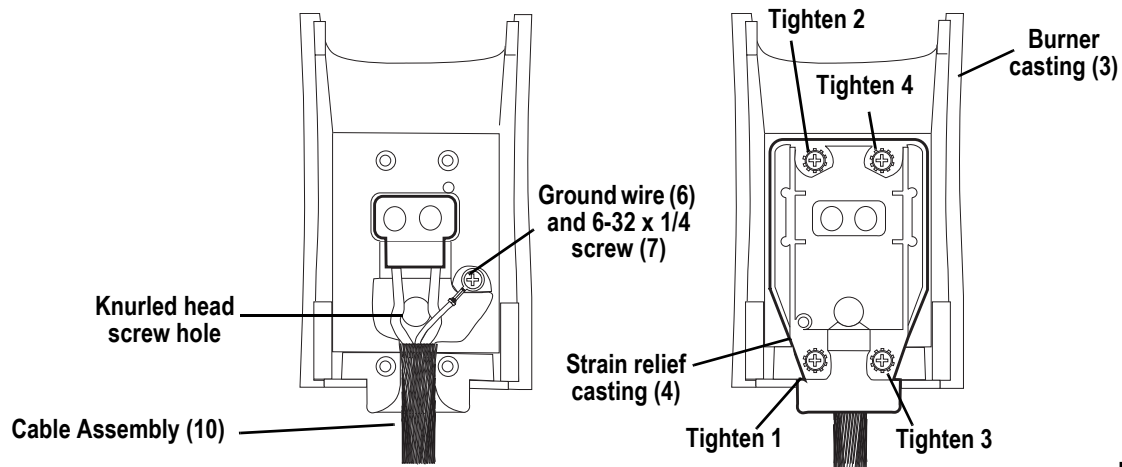


Figure 3

Tools Required:

- #2 Phillips screwdriver

Step 1: Snap the focus handle (5) onto the burner (3). See [Figure 2](#).

Step 2: Secure the ground wire lug (6) onto the burner casting (3) using screw (7).

Step 3: Place the cable assembly (10) into the burner casting (3). See [Figure 3](#).



Note:

Position the wires with the green and yellow ground wire on top of the two socket leads. Make sure the green and yellow ground wire is not touching any part of the burner casting.

Step 4: Insert the screws (8) into the four positions in the strain relief casting (4). See [Figure 3](#).

Step 5: Position the cable assembly (10) as shown in [Figure 3](#).

Step 6: Place the strain relief (4) on the burner casting (3). Loosely attach the screws (8). The cable assembly (10) must be centered in the strain relief opening (4). See [Figure 3](#).

Step 7: To guard against stripping the screws, tighten them in the order shown in [Figure 3](#).

Step 8: Make sure the focus handle is secure, then insert the knurled head screw (1) through the handle (5) into the burner casting (3). Tighten securely.

Step 9: Attach safety wire (11) to strain relief using the screw (14) as shown in [Figure 2](#).

Housing Assembly

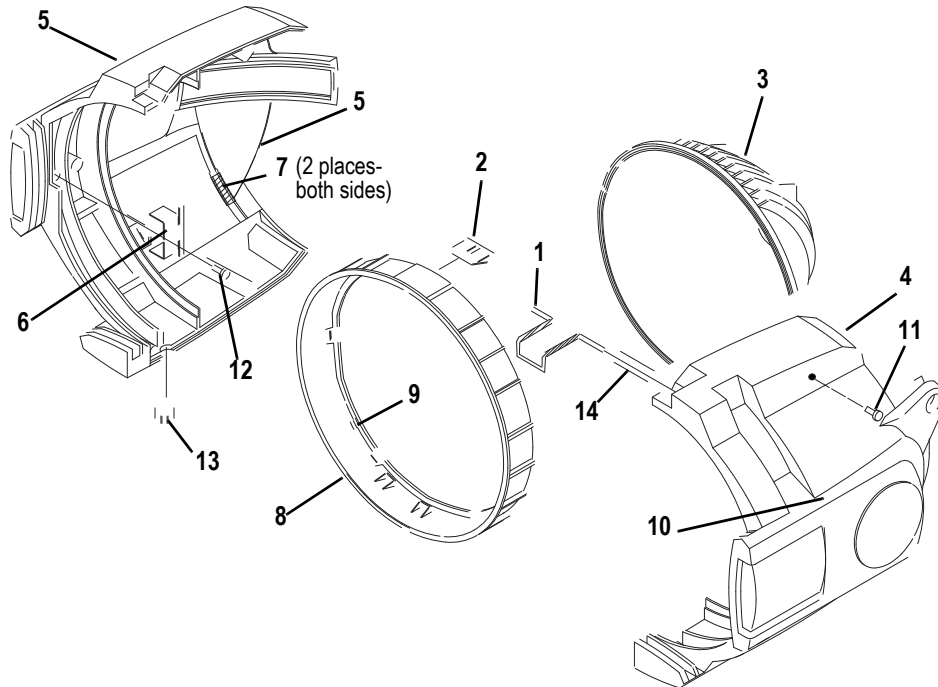


Figure 4

Reference Number	Part Number	Description	Quantity Required
1	7060A3100	Clip, gel retainer	1
2	7061A3013	Spring clip, rotator	1
3	7061A3014	Reflector, molded glass, coated, black	1
	7061A3014-1	Reflector, molded glass, coated, white	1
4	7061A3025	Barrel, right, black	1
	7061A3025-1	Barrel, right, white	1
5	7061A2019	Barrel, left, black	1
	7061A2019-1	Barrel, left, white	1
6	7061A3029	Clip, rotator, pressure	1
7	7061A4001	Pad, silicon, reflector mount	4
8	7061A4012	Lens rotator, black	1
	7061A4012-1	Lens rotator, white	1
9	7061A4029	Lens stop	1
10	7061A4030	Label, ETC S4 PAR, black	1
	7061A4030-1	Label, ETC S4 PAR, white	1
11	HW492	Screw, 10-32 x 5/8, PhPH, Taptite	3
12	HW4145	Screw, 10-32 x 3/8, PhPH, Taptite, BO	1
13	HW6128	Plug, focus knob, black	1
	HW6128-1	Plug, focus knob, white	1
14	HW750	Spring, retainer	1

Assemble housing

Tools Required:

- Minimally padded work surface (cardboard, carpet, or rubber mat recommended)
- Phillips screwdriver



WARNING: *This procedure may crack or break the reflector. Always wear gloves, safety glasses, and a dust mask when performing this procedure.*

- Step 1: Install the reflector mount silicon pads (7) in the left barrel assembly (6). Install the pads in two places on both sides. See [Figure 4](#).
- Step 2: Install the lens stop (9) and rotator spring clip (2) into the lens rotator (8). Install the lens rotator into the base rivet assembly (5).
- Step 3: Install the rotator pressure clip (6) into the left barrel (6) and attach using screw (12).
- Step 4: Install the gel retainer clip (1) and the spring (14) into the right barrel (4).
- Step 5: Install the reflector (3) into the left barrel (6). Align the rib on the reflector with the rivet assembly pocket as shown in [Figure 5](#).
- Step 6: Attach the right barrel (4) to the left barrel (6) using three screws (11). Hand tighten only (2.5 newton meters).
- Step 7: Check for ease of movement of the gel clip retainer (1). The clip should latch into the left barrel in the down position and be free of binding.
- Step 8: Check for smooth rotation of the lens rotator (8).
- Step 9: Snap the focus knob plug (13) into the bottom of the luminaire.
- Step 10: Attach label (10) onto the left barrel as shown in [Figure 5](#).

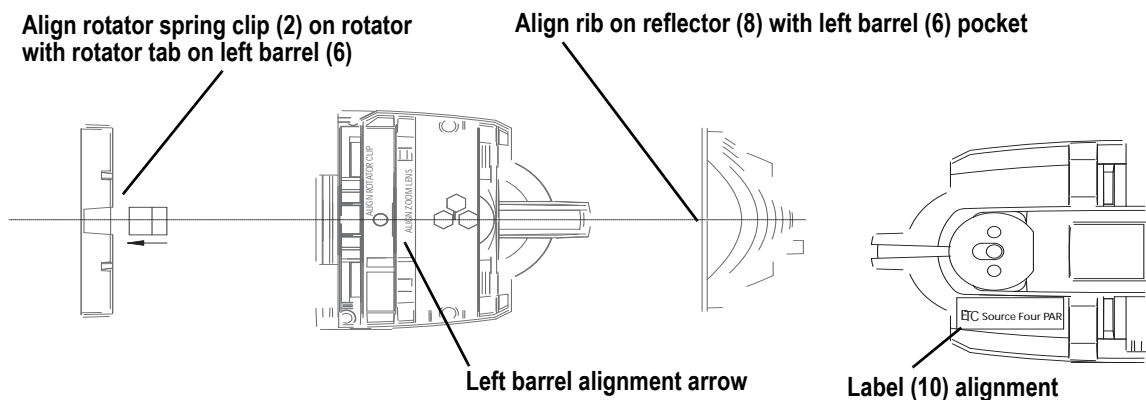


Figure 5

Step 11: Hold the lens by the edge and position it so the wave side faces the rear of the luminaire. See [Figure 6](#).

Step 12: From the top of the luminaire, slide the lens behind the lens catchers and position it behind the tabs on the bottom of the lens rotator ring.

Step 13: Gently push the top of the lens inward until it snaps behind the spring clip..

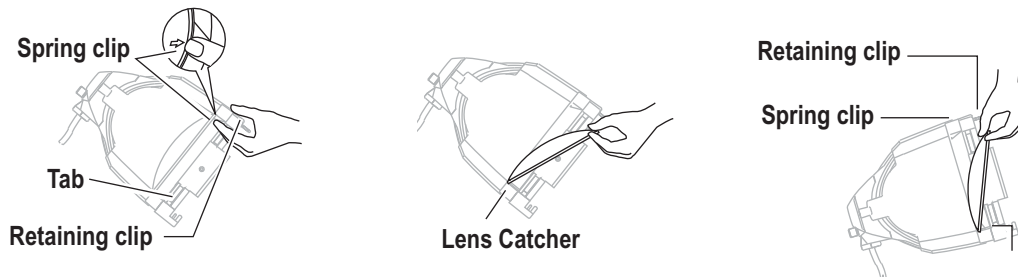


Figure 6

Cleaning the reflector



WARNING: *Do not use ammonia-based or other harsh commercial cleaners. Clean reflector only as directed.*

Commercially available glass cleaning agents should be avoided as they may contain ammonia, other harsh chemical detergents or abrasive agents. These cleaners may damage the glass surface and the Anti-Reflective coatings. Do not immerse or soak the glass in any cleaning solution.

Step 1: Remove the lens to expose the reflector so you can access it from the front of the luminaire.

Step 2: Remove dust with a blast of oil-free air or wipe with a clean, lint-free cloth. Isopropyl alcohol, distilled water or a 50%-50% mixture of each can be used to clean the glass surface.

Step 3: Reinstall a lens before using the luminaire.

Cleaning the lens



WARNING: *Do not use ammonia-based or other harsh commercial cleaners. Clean lens only as directed.*

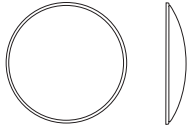
Commercially available glass cleaning agents should be avoided as they may contain ammonia, other harsh chemical detergents or abrasive agents. These cleaners may damage the glass surface and the Anti-Reflective coatings. Do not immerse or soak the glass in any cleaning solution.

Remove dust with a blast of oil-free air or wipe with a clean, lint-free cloth. Isopropyl alcohol, distilled water or a 50%-50% mixture of each can be used to clean the glass surface.

Lens identification

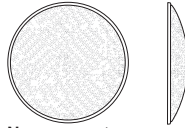
Lenses for the Source FourPAR come in four varieties. The type or beam spread can be identified by the texture of the lens.

VNSP



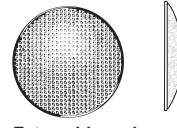
Very narrow spot
Clear glass
15° Round beam shape

NSP



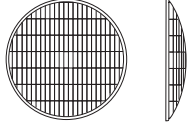
Narrow spot
Stipple glass (slight diffuse texture)
19° Round beam shape

XWFL (Optional)



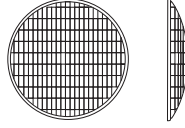
Extra-wide, or buxom, lens
Molded, borosilicate lens, multi-faceted
60° Round beam shape

MFL



Medium flood
Fewer facets, sized 6 x 22mm
21° x 34° Oblong beam shape

WFL



Wide flood
Many facets, sized 6 x 12mm
30° x 51° Oblong beam shape

Figure 7



Corporate Headquarters ■ 3031 Pleasant View Road, P.O. Box 620979, Middleton, Wisconsin 53562-0979 USA ■ Tel +608 831 4116 ■ Fax +608 836 1736
London, UK ■ Unit 26-28, Victoria Industrial Estate, Victoria Road, London W3 6UU, UK ■ Tel +44 (0)20 8896 1000 ■ Fax +44 (0)20 8896 2000
Rome, IT ■ Via Ennio Quirino Visconti, 11, 00193 Rome, Italy ■ Tel +39 (06) 32 111 683 ■ Fax +39 (06) 32 656 990
Holzkirchen, DE ■ Ohmstrasse 3, 83607 Holzkirchen, Germany ■ Tel +49 (80 24) 47 00-0 ■ Fax +49 (80 24) 47 00-3 00
Hong Kong ■ Rm 1801, 18/F, Tower 1 Phase 1, Enterprise Square, 9 Sheung Yuet Road, Kowloon Bay, Kowloon, Hong Kong ■ Tel +852 2799 1220 ■ Fax +852 2799 9325
Service: (Americas) service@etcconnect.com ■ (UK) service@etc europe.com ■ (DE) techserv-hoki@etcconnect.com ■ (Asia) service@etcasia.com
Web: www.etcconnect.com ■ Copyright © 2007 ETC. All Rights Reserved. ■ Product information and specifications subject to change.
7061M2510-06.01 ■ Rev A ■ Released 08/2007