

DX0.4

Networked System Controller



Features

- Professional 2-input, 4 output system processor for a wide range of system applications.
- Comprehensive, sophisticated processing options including EQ, gate, delay and limiting to optimise and protect a system.
- Fully assignable matrix routing of both inputs to any output with attenuation option on each routing node.
- Two balanced XLR inputs with up to 12dB of gain, polarity invert, 600ms of delay, 10 band parametric EQ with a choice of 16 filter types individually selectable for each band.
- Four balanced XLR outputs with 12dB of gain, polarity invert, 200ms delay, high and low pass filters with cut-off slopes from -6dB/oct to -48dB/oct using either Bessel, Butterworth or Linkwitz Riley filters. 8 band parametric EQ with up a choice of 16 filter types, Independent Program and Peak Limiters
- Convenient front panel controls and LCD display with an intuitive menu system for programming or modifying settings. One press mute buttons for all inputs and outputs.
- Front panel USB port for quick and easy PC connection.
- Networking option using either Ethernet or RS485 for larger systems.
- Output channel preset import function to quickly and easily compile a system to suit any application utilising a library of Martin Audio product channel presets.
- Six segment LED metering for input and output levels and limiter operation.
- 32 User Presets to store system configurations.
- 3-level customisable user modes with individual password protection.
- Universal switch mode mains PSU accepts 90 to 240V, 50/60Hz.
- Compact 1 rack unit design.
- Approximate shipping weight: 3.5kg

The DX0.4 is the ideal processing tool to partner the ADORN, CDD and BlacklineX ranges or indeed any system where comprehensive system control and protection is required, perhaps where there may be budget constraints.

The DX0.4 offers a substantial array of processing options. Routing is freely assignable from the 2 inputs to the 4 outputs. Input and output equalisation is available with a choice of 16 filter options. An input noise gate will help deal with noisy signal sources. Input and output delay is available to time align components in a system. Crossover filters with slopes from -6dB/octave up to -48dB/octave are available in the three most popular filter types, and a two-stage limiter; program and peak, will protect your speakers from damage due to excessive power.

The processor feature 32 User Memory locations to store popular configurations and settings can be exported to a file via the dedicated PC application. PC connectivity is available via a front panel USB port for quick and easy connection of a single processor, but larger systems with several processors can use Ethernet or RS485 network connections.

A very useful function is the ability to recall entire output channel configurations and a comprehensive library of output files for Martin Audio products is available making it very quick and easy to create exactly the configuration you need even where the system utilises products from several different Martin Audio ranges.

The DX0.4 features professional grade specifications to ensure the best possible sonic performance from your Martin Audio system, ideal for a wide range of portable and installed applications.

DX0.4

Networked System Controller

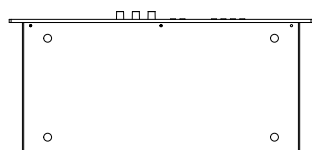
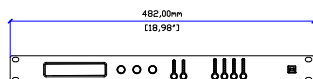
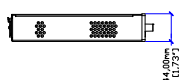
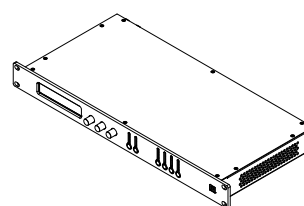
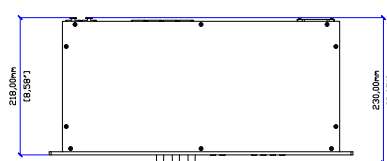
Technical Specifications

General	
INPUT IMPEDANCE:	20k Ohm balanced
OUTPUT IMP:	100R
MAX INPUT LEVEL:	+20dBu
MAX OUTPUT LEVEL:	+18dBu
CROSSTALK:	<-95dB
SAMPLE RATE:	96kHz
SIGNAL TO NOISE RATION	>113dB (A weighted)
NOISE FLOOR:	<-94dB (A weighted)
COMMON MODE REJECTION RATIO	60dB
FREQUENCY RESPONSE:	20Hz - 40kHz +0.3dB
INPUT A/D DYNAMIC RANGE:	118dB
OUTPUT D/A DYNAMIC RANGE:	118dB
THD (+4dBu 1kHz):	<0.003%
MAINS VOLTAGE RANGE:	85-230VAC 50-60Hz
NOMINAL POWER CONSUMPTION:	30W

Connectors	
AUDIO INPUT:	2 x 3 pin female XLR
AUDIO OUTPUT:	4 x 3 pin male XLR
ETHERNET:	Shielded RJ45, Dynamic or Static IP
RS485:	2 x RJ45
USB:	1 x USB B (Front Panel)
MAINS:	3 pin IEC

Processing	
SIGNAL GENERATOR:	White/pink noise, -30dBu to +10dBu
GAIN:	-18dB to +12dB, step accuracy 0.1dB
INPUT EQUALISER:	10 band PEQ, gain range +15dB 16 x Filter types
INPUT GATE:	Threshold: -40 to -80dBu Attack: 1 to 1,000ms Release: 1 to 1,000ms
ROUTING:	Freely assignable 2-in, 4 out Up to 30dB attenuation on each node
DELAY:	Input: 600ms Output: 200ms Steps: 20us, Units: milliseconds, metres, feet
OUTPUT FILTERS:	High & Low Pass, -6dB/Octave to -48dB/Octave Slope types: Butterworth, Bessel, Linkwitz Riley
OUTPUT EQUALISATION:	8 band PEQ, gain +15dB 16 x filter types FIR Filter Import
PROGRAM LIMITER:	Threshold: -10 to +20dBu Attack: 1 to 1,000ms Release: 10 to 3,000ms
PEAK LIMITER:	Threshold: 0 to 12dB above Program Limiter Threshold Release: Fast (91ms), Medium (350ms), Slow (800ms)

Dimensions	
Height:	1U (44mm) [1.75"]
Width:	482mm [19"]
Depth:	230mm [9.1"]
Weight:	3.0kg [6.6lb]



DX0.4

Martin Audio Ltd
Century Point, Halifax Road, High Wycombe
Buckinghamshire HP12 3SL, England

Telephone: +44 (0) 1494 535 312
Email: info@martin-audio.com

All information is Copyright © 2023 Martin Audio Ltd.



www.martin-audio.com