

PROTECH LED

be creative



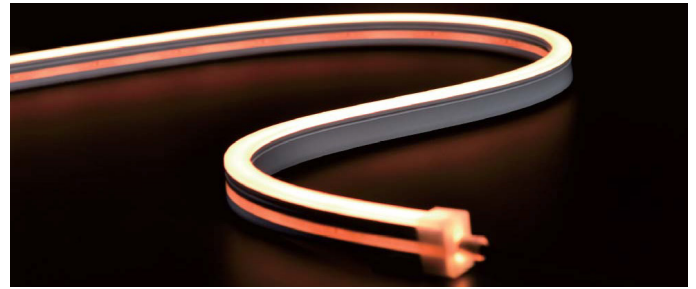
LED NEON FLEX SPECIFICATION

AN-S1018



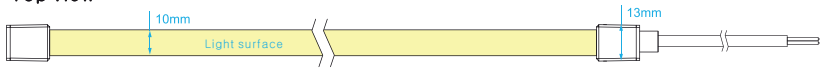
AN-S1018

Regular power 5W/m, 10W/m and 15W/m for option
 Max length 33 meters with one end power
 Eight CCT optional from 2100K to 6000K

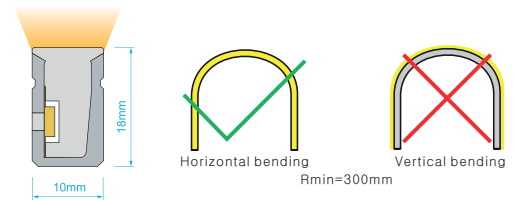
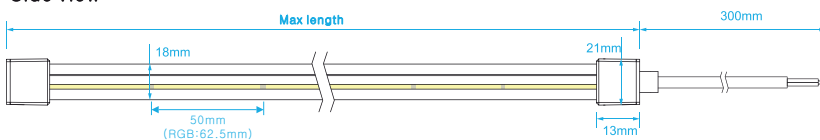


DIMENSIONS & WATERPROOF

Top view



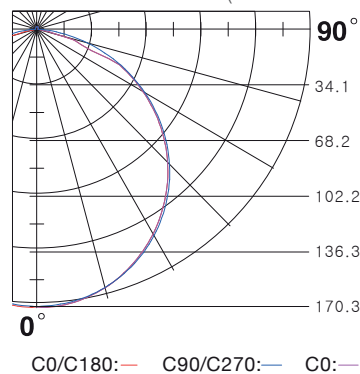
Side view



PRODUCT SPECIFICATION

| | |
|---------------------|---------------------|
| Voltage | DC24 V |
| CRI/Ra | >90 |
| Ambient temperature | -25°C~45°C |
| Color Type | Cutting length (mm) |
| Single color | 50 mm |
| Tunable white | 50 mm |
| RGB color | 62.5 mm |

POLAR CURVE (The data base on 15W 4000K)



WHITE COLOR PARAMETERS

| | CCT (K) | Low power (5w/m) (lm/m) | (5w/m) (max length) | Medium power (10w/m) (lm/m) | (10w/m) (max length) | High power (15w/m) (lm/m) | (15w/m) (max length) |
|-----|-----------------|-------------------------|---------------------|-----------------------------|----------------------|---------------------------|----------------------|
| W21 | 2100K +100 -100 | 141.4 | 25 m | 276.4 | 17 m | 375.9 | 13 m |
| W24 | 2400K +100 -100 | 138.7 | 25 m | 273.3 | 17 m | 371.5 | 13 m |
| W27 | 2700K +100 -100 | 160.4 | 25 m | 312.6 | 17 m | 421.9 | 13 m |
| W30 | 3000K +100 -100 | 163.4 | 25 m | 328.4 | 17 m | 441.3 | 13 m |
| W35 | 3500K +200 -100 | 170.3 | 25 m | 327.0 | 17 m | 452.6 | 13 m |
| W40 | 4000K +300 -200 | 178.3 | 25 m | 356.0 | 17 m | 484.1 | 13 m |
| W50 | 5000K +300 -200 | 180.3 | 25 m | 346.0 | 17 m | 483.9 | 13 m |
| W60 | 6000K +300 -100 | 177.2 | 25 m | 353.9 | 17 m | 468.5 | 13 m |



AN-S1018

TUNABLE COLOR PARAMETERS

| | CCT (K) | Low power (lm/m) | (5w/m) (max length) | Medium power (lm/m) | (10w/m) (max length) | High power (lm/m) | (15w/m) (max length) |
|----|------------|------------------|---------------------|---------------------|----------------------|-------------------|----------------------|
| TW | 2500-2900K | 77.2 | 5 m | 163.2 | 5 m | 219.0 | 5 m |
| TW | 5000-5800K | 83.0 | 5 m | 173.5 | 5 m | 231.5 | 5 m |
| TW | 3500-4200K | 160.8 | 5 m | 337.0 | 5 m | 451.8 | 5 m |

WHITE COLOR PARAMETERS

| | color | Low power (lm/m) | (5w/m) (max length) | Medium power (lm/m) | (10w/m) (max length) | High power (lm/m) | (15w/m) (max length) |
|-----|--------|------------------|---------------------|---------------------|----------------------|-------------------|----------------------|
| R | Red | 70.0 | 33 m | 150.0 | 22 m | 192.2 | 17 m |
| G | Green | 190.0 | 25 m | 356.0 | 17 m | 466.0 | 13 m |
| B | Blue | 38.0 | 25 m | 71.0 | 17 m | 92.7 | 13 m |
| Y | Yellow | 59.0 | 33 m | 116.0 | 22 m | 37.4 | 17 m |
| P | Pink | 74.0 | 25 m | 148.0 | 17 m | 195.8 | 13 m |
| RGB | RGB | 82.0 | 5 m | 144.0 | 5 m | 108.0 | 5 m |

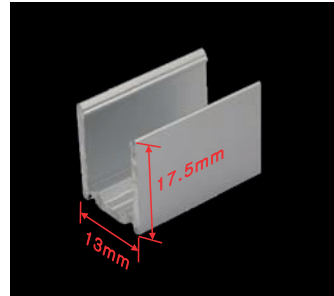
ACCESSORY



Endcap connector with hole



Endcap without hole

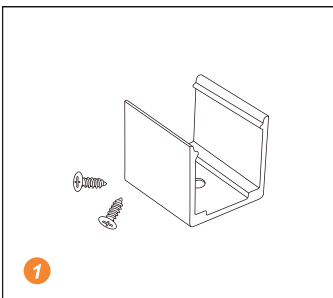


Mounting clip (length: 2cm)
Mounting channel (length: 1m, 2m, 3m)

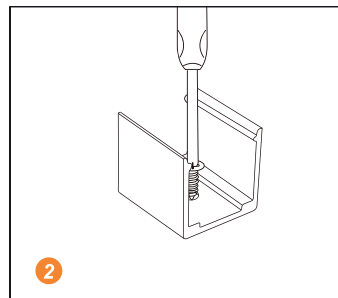


Scissors with angular scale

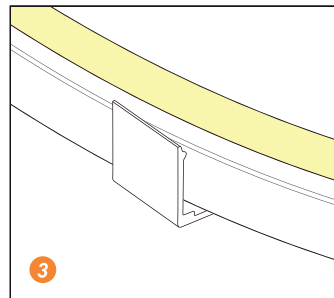
INSTALLATION



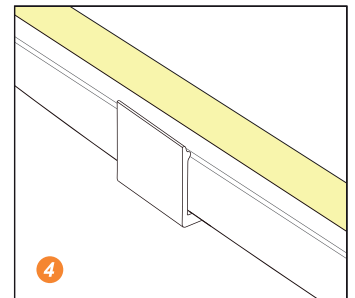
1 Prepare the screws and mounting clips



2 Adjust the fixed clips to the appropriate place, use a screwdriver to fix the screw.



3 Put the light emitting surface upwards, then insert the LED strip into the fixed clips.



4 Fix NEON strip completely into the fixed clip.

