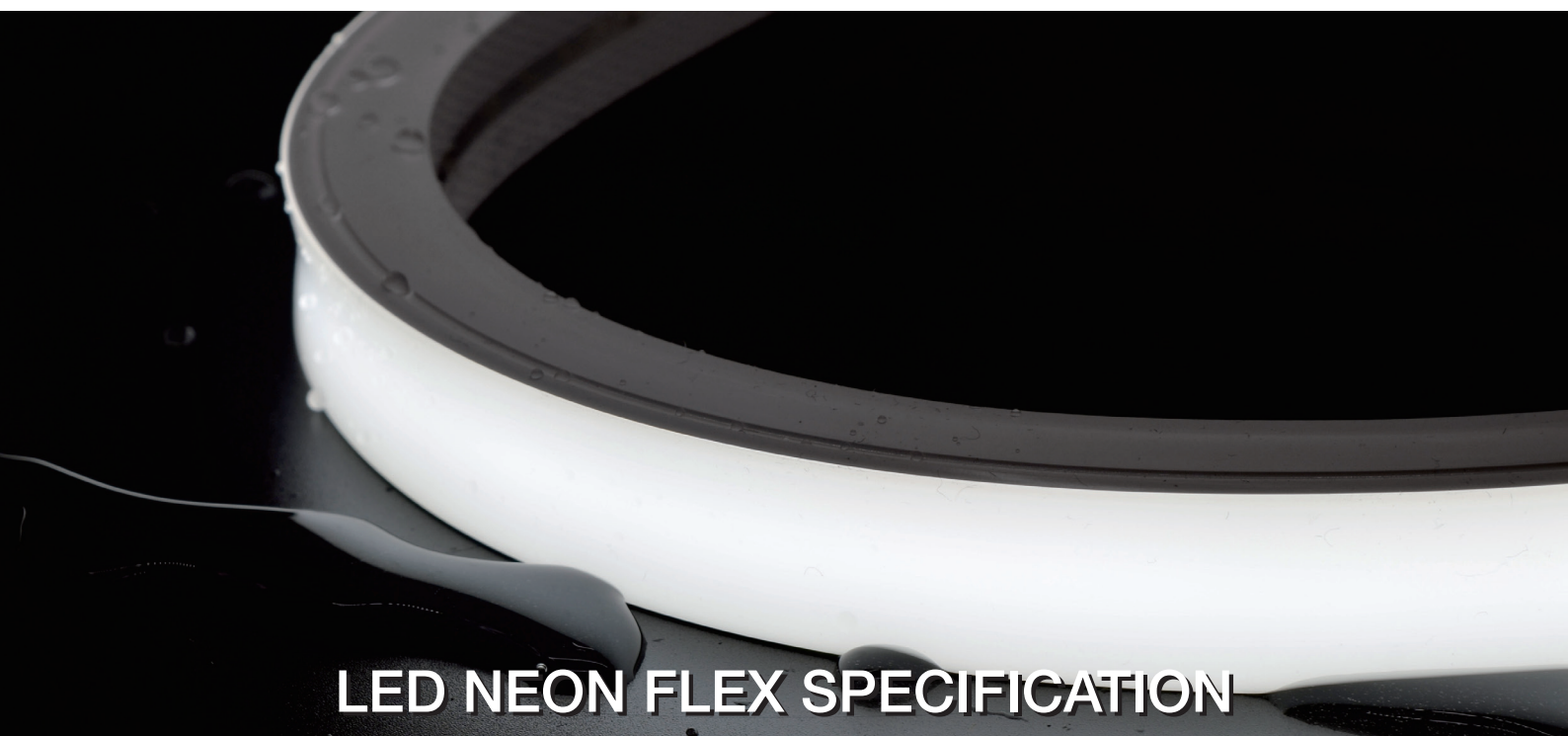


PROTECH LED

be creative



LED NEON FLEX SPECIFICATION

AN-T3020



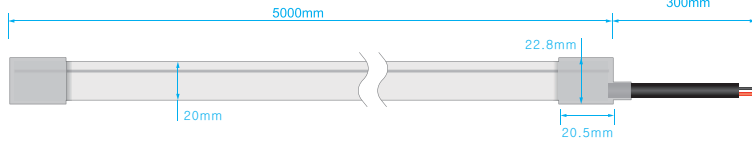
AN-T3020

Regular power 16W/m, 20W/m and 24W/m for option
 Max length 25 meters with one end power
 Eight CCT optional from 2100K to 6000K

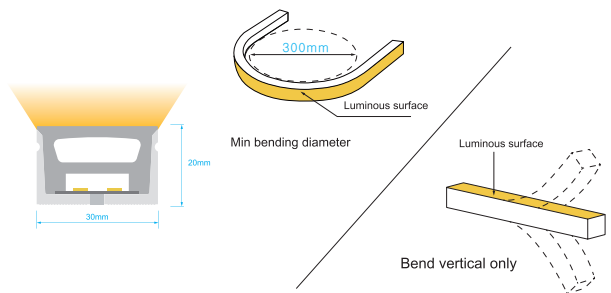
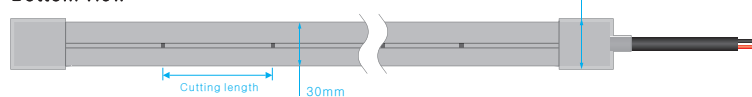


DIMENSIONS & WATERPROOF

Side view



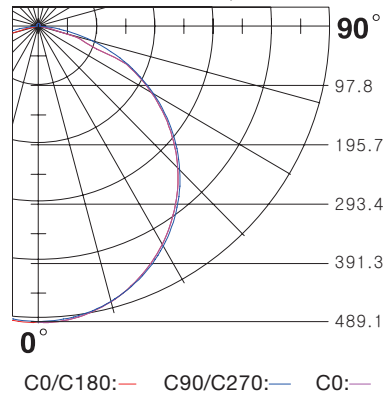
Bottom view



PRODUCT SPECIFICATION

Voltage	DC24 V
CRI/Ra	>90
Ambient temperature	-25°C~45°C
Color Type	Cutting length (mm)
Single color	50 mm
Tunable white	41.66 mm
RGB color	41.66 mm
RGBW color	41.66 mm

POLAR CURVE (The data base on 20W6000K)



WHITE COLOR PARAMETERS

	CCT (K)	Low power (16w/m) (lm/m)	(16w/m) (max length)	Medium power (20w/m) (lm/m)	(20w/m) (max length)	High power (24w/m) (lm/m)	(24w/m) (max length)
W21	2000-2200K	836.9	18 m	1017.0	16 m	1196.0	14 m
W24	2300-2500K	855.5	18 m	1040.6	16 m	1226.0	14 m
W27	2600-2800K	991.0	18 m	1209.6	16 m	1426.0	14 m
W30	2900-3100K	1001.0	18 m	1222.0	16 m	1439.0	14 m
W35	3400-3700K	925.7	18 m	1129.4	16 m	1333.0	14 m
W40	3800-4300K	1050.0	18 m	1280.0	16 m	1511.0	14 m
W50	4800-5300K	1067.0	18 m	1298.0	16 m	1534.0	14 m
W60	5900-6400K	962.6	18 m	1176.0	16 m	1390.0	14 m

AN-T3020

TUNABLE COLOR PARAMETERS

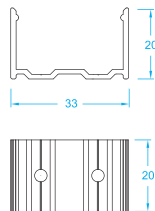
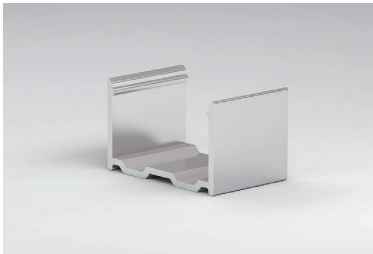
	CCT (K)	Low power (lm/m) (16w/m) (max length)	Medium power (lm/m) (20w/m) (max length)	High power (lm/m) (20w/m) (max length)
TW	2700-3000K	500.5 5 m	609.7 5 m	722.2 5 m
TW	5600-6300K	528.5 5 m	651.1 5 m	769.5 5 m
TW	3800-4300K	1008.0 5 m	1232.8 5 m	1457.0 5 m

RGB & RGBW COLOR PARAMETERS

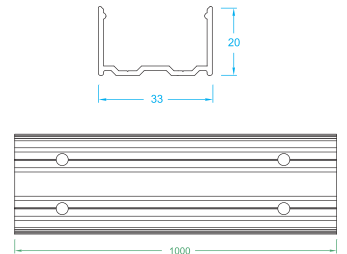
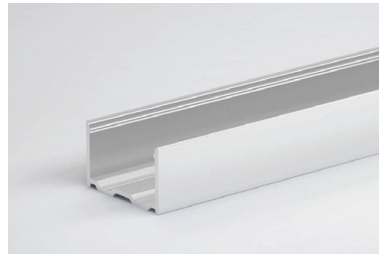
	Color	Low power (lm/m) (16w/m) (max length)	Medium power (lm/m) (20w/m) (max length)	High power (lm/m) (24w/m) (max length)
R	Red	435.4 25 m	530.0 22 m	617.5 19 m
G	Green	1071.0 18 m	1243.0 16 m	1445.0 14 m
B	Blue	221.7 18 m	268.2 16 m	314.3 14 m
Y	Yellow	352.8 25 m	338.0 22 m	367.8 19 m
P	Pink	431.3 18 m	518.8 16 m	613.2 14 m
RGB	RGB	461.3 5 m	536.0 5 m	614.0 5 m
RGBW	RGBW	591.3 5 m	719.8 5 m	840.7 5 m

MOUNTING ACCESSORY

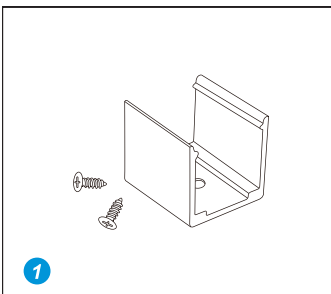
Aluminium Mounting clips



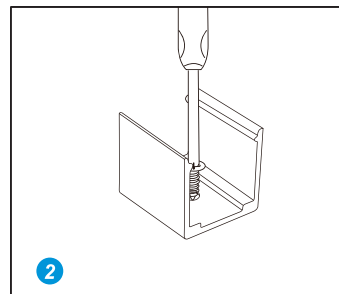
Aluminium Profile



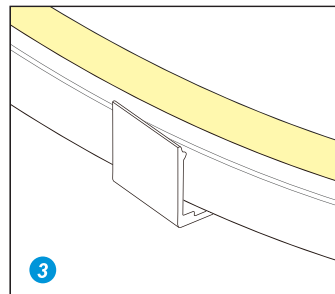
INSTALLATION



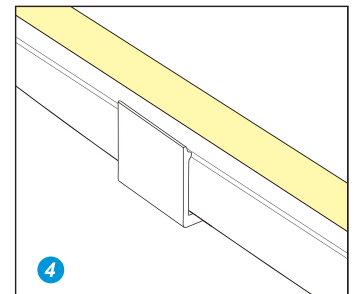
1 Prepare the screws and mounting clips



2 Adjust the fixed clips to the appropriate place, use a screwdriver to fix the screw.



3 Put the light emitting surface upwards, then insert the LED strip into the fixed clips.



4 Fix NEON strip completely into the fixed clip.

