



MONARQ Mini

DMX Luminary Controller

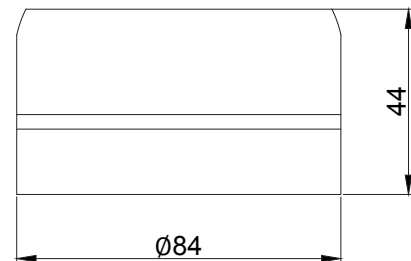


MONARQ Mini is alternative controller for DMX luminaries mounted on top of the luminaire or pole through NEMA socket or wiring. MONARQ Mini communicates with server by GSM/GPRS/EDGE.

Easy installation and no additional wiring makes it perfect solution for lighting of ancient buildings, important historical places, and monuments. Mini's appearance is customizable based on installation requirements.

Key Features

- Galvanically isolated DMX512 output with RDM support
- Control and synchronize individual DMX luminaries by scenarios
- Multiple devices can be synchronized by GPS/GLONASS
- Upload scenarios remotely by GSM/GPRS/EDGE
- Scenarios are stored in non volatile memory
- No additional wiring
- Capable of switching the load by 1-1000 W



QULON CMS

QULON is a powerful yet extremely flexible Central Management System for street lighting. A combination of software applications and different hardware technologies that will offer you full control over any kind of lighting network enabling activity scheduling, real time faults notification, remote meter reading, performance analysis, custom dimming scenarios creation, maintenance workflow management and much more, increasing efficiency and cutting down costs.



MONARQ Mini

DMX Luminary Controller

Technical Specifications

Mechanical

- Housing: Solid case
- Material: Plastic
- Dimensions, mm: 84(D) x 44(H) x 84(W)
- Mass: 0.2 kg
- Mounting: Luminaire case, pillar, e.t.c

Power & Electrical

- Input Voltage: ~100-270 VAC, 50/60 Hz
- Input Power (max): 5 W
- Max load Power: 1000 W

Environmental

- Operating Temperature: -40...+70°C
- Storage Temperature: -50...+80°C
- Operating Relative Humidity (max): 100%
- IP Rating: IP 65
- Certification: CE, RoHS
- Warranty: 36 Month (Return to base)

Inputs / Outputs

- Connectors: Leads, NEMA socket
- Sensors: Motion sensor input, Embedded light sensor

Interfaces and Protocols

- Control output interface: DMX512
- Navigation: GPS/GLONASS
- Radio Channel: GSM 850/900/1800/1900
- Transmit Power Range(s):
Class 4 (+33dBm ± 2dB) for EGSM 850/900;
Class 1 (+30dBm ± 2dB) for GSM 1800/1900

Configuration / Indication

- Setup: Remote via software
- Indication: LED

Package Contents

- MONARQ Mini
- User guide

Product Line

Name	Modification	Product code
MONARQ Mini	NEMA connection Wired connection	QUL-GSM-N-DMX QUL-GSM-W-DMX



UNDRAX
electronics
lighter than ever

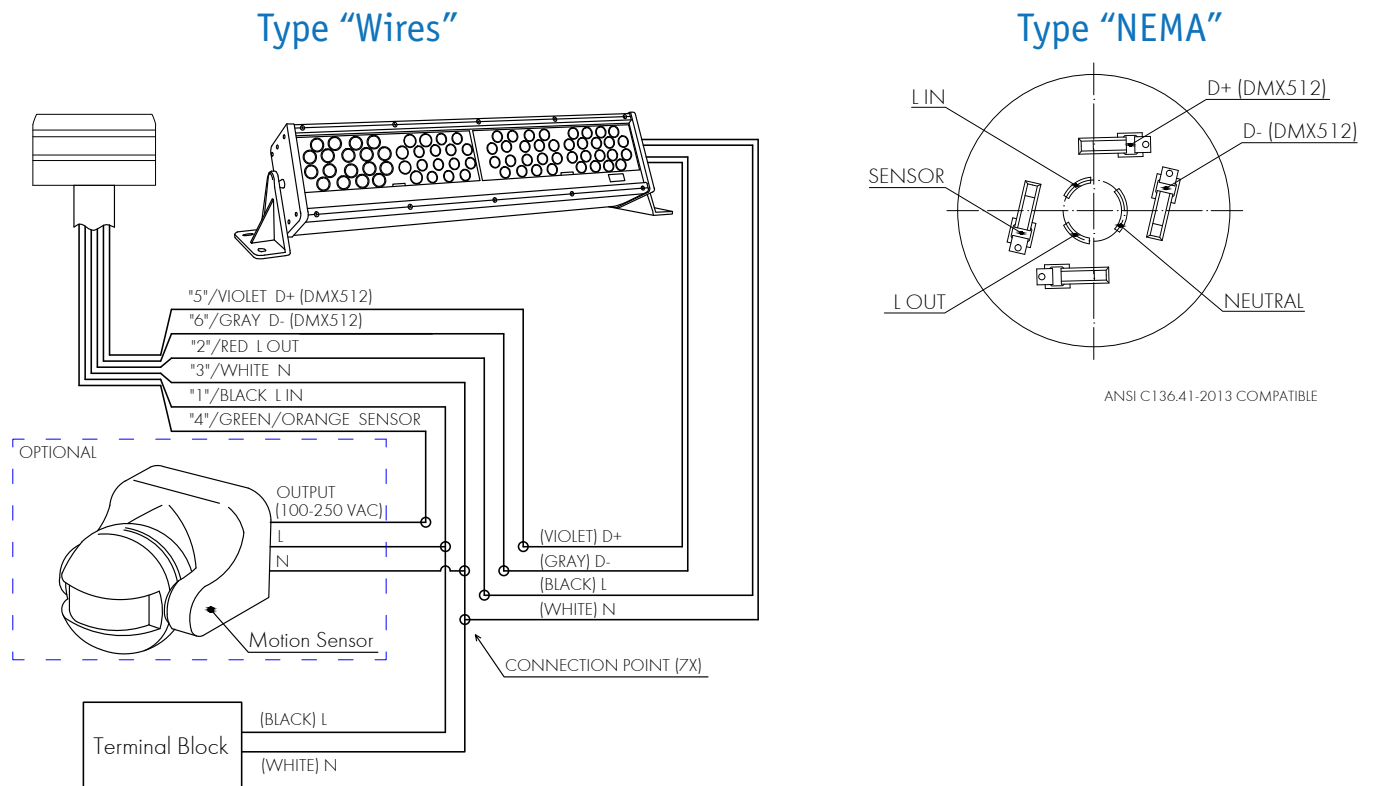


Sundrax Electronics,
6008, First Central 200,
2 Lakeside Drive, Park Royal, London
NW10 7FQ United Kingdom
+ 44 (0) 208 991 33 19
office@sundrax.com
www.sundrax.com

MONARQ Mini

DMX Luminary Controller

Connection Scheme



Accessories

Name	Product code
5-pin connector socket (NEMA)	QUL-ACC-NEM-135
7-pin connector socket (NEMA)	QUL-ACC-NEM-137
Motion sensor	QUL-ACC-RFM-112
Kit for detachable installation	QUL-ACC-RFM-141
Kit for mounting on the pillar	QUL-ACC-RFM-142
Kit for mounting on the wall	QUL-ACC-RFM-143
Kit for mounting on the lighting cabinet	QUL-ACC-RFM-144

Disclaimer

To the best of our knowledge, the technical data contained herein is true and accurate at the date of issuance and is subject to change without prior notice. No liability accepted for errors or omissions. Always make sure to use the most recent release and contact Sundrax Electronics to verify correctness before placing your order.



UNDRAX
electronics
lighter than ever



plasa
member

Sundrax Electronics,
6008, First Central 200,
2 Lakeside Drive, Park Royal, London
NW10 7FQ United Kingdom
+ 44 (0) 208 991 33 19
office@sundrax.com
www.sundrax.com