



lighting control

2022

www.visualproductions.nl

BSTATION2

WALL-MOUNT BUTTON PANEL



B-Station2

The **B-Station2** is a wall-mount button panel with 6 push-buttons. It can remote control the **CueCore**, **DaliCore**, **IoCore** or **LPU-2**. The buttons have a RGB light-ring and can provide visual feedback, for example, to indicate the selected cue or active show. Multiple units can be networked together.

The **B-Station2** fits European and North American gang boxes. Easy to wall-mount, even when no gang box is available. The **B-Station2** contains an inbuilt lighting controller that is sufficient for small architectural projects.

CUECORE3

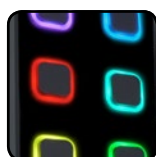
ARCHITECTURAL LIGHTING CONTROLLER



CueCore3

The **CueCore3** is the flagship lighting controller for the most demanding architectural lighting projects. Equipped with a powerful CPU and large flash memory, this **CueCore** offers extensive programming possibilities in terms of playbacks, recordings and automation.

The **CueCore3** is supported by the **Purple Cloud**, a remote management platform that allows users to remotely monitor, troubleshoot and reprogram the devices.



6 Push-Buttons

The buttons are lit by RGB LEDs. There is complete freedom in choosing which function is assigned to the buttons.



Stand-Alone Controller

Control small architectural installations stand-alone with the inbuilt lighting controller for 32 fixtures and 6 zones, including FX Generator.



Control AV equipment

B-Station2 speaks many protocols that are popular in systems integration. Compatible with equipment like media players and show control.



Multi Protocol

Support for various protocols including DMX- 512 and Ethernet based protocols such as Art- Net, sACN, UDP & OSC.



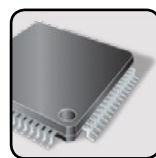
Power over Ethernet

This device is conveniently powered by PoE (Power over Ethernet). No separate power supply is needed. The B-Station2 uses PoE Class I.



16 Playbacks

The additional playbacks offers flexibility in implementing the project requirements and makes it easy to control more zones.



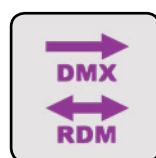
6 GB memory

6 GB of memory is available for external DMX recording. This memory size allows extensive recording of pixel heavy DMX shows.



Purple Cloud

Connect to the Purple Cloud and get real-time monitoring or remote control. This makes it possible to diagnose and fix problems remotely.



RDM

The DMX ports on the CueCore3 are RDM compatible, enabling RDM commissioning and monitoring the status of your RDM fixtures.



Fast web interface

The CueCore3 is equipped with an intuitive and real-time web GUI. Make all functions available without the need to install special software.

CUECORE2

ARCHITECTURAL LIGHTING CONTROLLER

QUADCORE

ARCHITECTURAL LIGHTING CONTROLLER



CueCore2

The **CueCore2** is a 1,024 DMX channel lighting controller for permanent installations. The device is completely solid-state, with no moving parts. It is an extremely secure and low-maintenance installation control solution that has only a minimal power consumption.

All operating and programming is done through its dynamic web interface. Each **CueCore2** includes a 2-universe licence for the **CueluxPro** software.

QuadCore

The **QuadCore** is a solid-state lighting controller that features 2,048 DMX channels across 4 DMX outputs. The onboard flash memory allows for storing DMX shows.

The **QuadCore** includes a 4-universe license of **CueluxPro**. Larger universe numbers are achieved by stacking more **QuadCores**. Targeted at channel hungry projects that typically involve pixel mapping, the **QuadCore** reduces the cost per DMX universe.



Stand-Alone Playback

Simultaneous playback of dynamic DMX shows or static lighting scenes. They can be recorded from DMX, Art-Net, sACN or CueluxPro.



Show Control

Events can be triggered via weekdays, date, time, sunrise, sunset, DMX, Art-Net, sACN, HTML, TCP, UDP and OSC.



Timecode

Trigger events or synchronise playback by timecode. Both units support Art-Net, CueCore2 also features SMPTE and MTC.



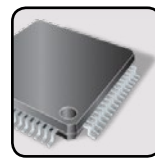
MIDI (CueCore2 only)

IN and OUT port supporting MIDI, MSC and MMC. Incoming messages can be used to trigger functions within the CueCore2.



GPI (CueCore2 only)

The GPI port features 4 dry contact-closures, which can trigger any event within the CueCore2. The ports can also be set to 0-10V level input.



Solid-State

The units are constructed without any moving part or forced cooling. Data is securely stored in onboard flash. Designed for maximum reliability.



Internal Clock

The internal clock is used for scheduling events based on time, date or weekday. NTP is supported for synchronising with an external server.



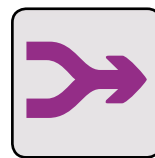
Master-Slave

Multiple Cores can easily be used together. Only the master needs to have its triggers programmed, the slaves will follow in sync.



Ethernet-DMX node

The devices can also function as a 2- or 4-universe bi-directional Ethernet to DMX node. It supports Art-Net, sACN and KiNet.



DMX Merging

The QuadCore can merge incoming data from DMX, Art-Net and sACN. The merging behaviour can be determined by setting the HTP or Priority.



IoCore2

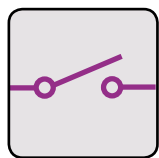
The **IoCore2** is an expansion module in the product family of solid-state lighting controllers. It offers interfacing to digital and analogue inputs and digital outputs and supports various other protocols that are common in lighting and show control.

The compact and versatile **IoCore2** is the ideal expansion for the **CueCore** and **QuadCore** in projects that demand more IO. Furthermore, **IoCore2** is equally well suited for stand-alone IO interfacing or working together with any third-party show control system.

DaliCore

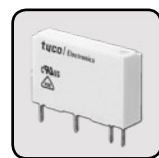
The **DaliCore** is an application lighting controller that supports DALI, DT-6 and DT-8. An ideal solution for a stand-alone DALI installation as the **DaliCore** takes care of the commissioning and daily control of the DALI fixtures.

Featuring a bi-directional DMX port, the **DaliCore** is capable of controlling hybrid systems containing both DALI and DMX luminaries.



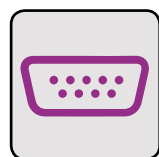
Inputs

The eight GPI ports can be configured as digital contact-closures, or as analog 0-10V level inputs ideal for sensors.



Outputs

The IoCore2 features eight GPO ports. These ports are relays for creating pulses on contact-closures or switching external equipment.



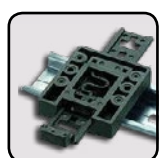
RS-232

The bi-directional serial port allows integration with legacy equipment. RS-232 can be used for triggering and conversions.



DMX

The DMX port is switchable between input and output. It can be used for conversion (e.g. GPI->DMX) or triggering (e.g. DMX->RS-232).



DIN Rail

The desktop IoCore can be easily mounted on a DIN rail by using the optional DIN rail mount adapter.



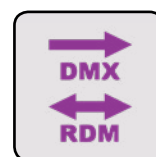
DALI

Control up to 64 DALI fixtures including DT-8 and interact with DALI actuators and sensors. Commission fixtures, set addresses and groups.



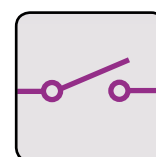
DMX

Control DMX fixtures, use DMX to trigger DALI scenes or convert between DMX and DALI.



RDM

Discover RDM capable DMX fixtures and set their starting addresses remotely. RDM sensor readings are displayed in the web-GUI.



GPI

The GPI port features 4 dry contact-closures, which can trigger any event within the DaliCore. The ports can also be set to 0-10V level input.



Ethernet

Plug into the ethernet network and extend the DaliCore by connecting to B-Station, CueCore, IoCore or Kiosc.



Timecore

Entertainment shows and themed environments require show-disciplines like sound, lighting, video, animatronics and pyrotechnics to be synchronised.

The **TimeCore** is a one-stop toolbox for timecode; it is a reliable device for generating, following and converting various timecode protocols; both traditional protocols like SMPTE and MTC as well as new Ethernet-based protocols.

Kiosc

Kiosc enables to create custom touch screen user interfaces for Visual Productions' controllers. **Kiosc** is designed to have no editing capabilities, making it a foolproof interface that can be safely presented to non-technical operators.

Kiosc is available as a wall-mount touchscreen. It is a plug & play, 7 inch resistive touchscreen with 800x480 resolution. **Kiosc Touch** uses PoE Class III. The **Kiosc App** can also be downloaded for your own iOS, Android, Windows, macOS and Linux devices.



Display

A large LED display gives a real-time readout on the current timecode frame. The timecode can also be monitored via the web-interface.



Generator

The TimeCore can be set to be a timecode master, generating a stable timecode signal. The device can also be set as a timecode slave.



Convertor

The TimeCore is capable of converting between any of the SMPTE, MTC and Art-Net timecode protocols and frame-rate.



Custom Logos

Enrich the graphical user interface with your own images such as company logos or project-specific images.



Lighting GUI

Kiosc provides you with a graphical user interface that is perfect for controlling lighting installations.



Editor

Kiosc is accompanied by the **Kiosc Editor** that allows you to easily design custom layouts, including the use of images and logos.

RdmSplitter

Optically isolated splitter for distributing and boosting DMX-512 signals.



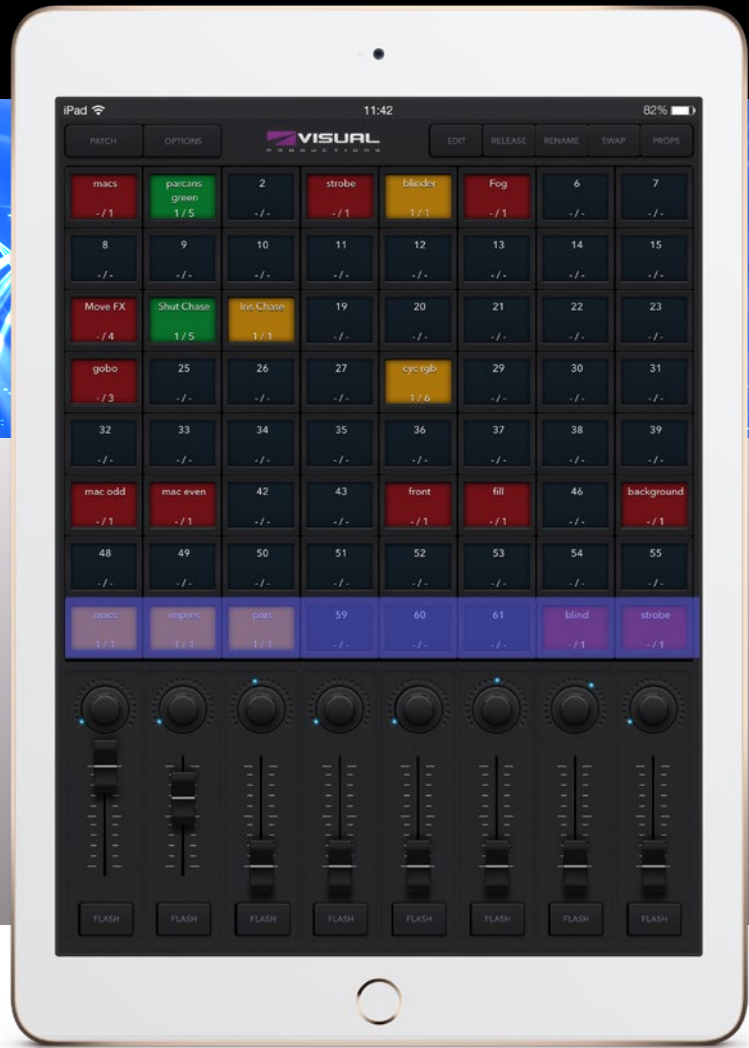
- 6 DMX-512 Outputs
- RDM
- Optical isolation per port
- DIN Rail mounted
- 9-24V DC
- Terminal and RJ-45 version

DmxMerger

Optically isolated DMX-512 merger in a DIN rail form factor.



- 3x HTP input
- 2x LTP input
- 1x Priority input
- Optical Isolation per port
- DIN Rail mounting
- 9-24V



Cuety

Cuety is a new generation lighting controller that turns your iPad or Android tablet into a powerful lighting console. Easy to use and budget friendly, Cuety enables you to take full advantage of the tablets mobility and multi-touch display. The controller has full support for moving heads, LEDs, conventional lighting and DMX controlled special effects.



LPU

The Cuety app requires the LPU-1 or LPU-2. This device is connected via Ethernet and offers a optically isolated DMX-512 port.



Architecture

The system architecture of the Cuety and LPU is designed for robustness. The LPU contains the engine that runs your show, calculates fade times and renders dynamic FXs. The App is your user-interface.



Cuelist

Cuety adapts the cuelist-based system standard to the professional lighting industry. You will be programming your lights according to the same workflow that LDs use for stadium-size events. Cuety just simplifies it.



FX

An inbuilt FX generator provides you with automatic movements for pan & tilt, various intensity chases and colourful RGB effects. The FX generator can be tweaked by changing its speed, size and phase parameters.



Remote

The Cuety Remote is a simple and intuitive app for your iPhone. It allows you to remote control your LPU. You can use it to call up your pre-programmed cues with-out the risk of inadvertently making a change.

	LPU-1	LPU-2
Market	Entertainment	Installation
DMX Channels	512	512
Fixtures	64	64
Playbacks	64	64
Cues per Playback	48	48
FX Generator	✓	✓
Personality Files	4500+	4500+
HTTP		✓
TCP		✓
UDP		✓
OSC		✓

